



IMPORTANT

Dear renter, welcome in one of the most prestigious residences at the Belgian Coast. May we kindly ask you to read this document carefully to facilitate your lay-over.

We wish you a very pleasant stay !

*Kirsten Timmerman
Kristen Edlund*

House Rules

1. In general, **smoking** is forbidden in the building.
2. **After 22 pm** : reduce all noise levels to a minimum
3. **Garbage** : there is a garbage depot in the building; situation : when you enter the building via the main entrance, you take a right, then left, at the end of the corridor left (right door; just in front of the elevator); go down some stairs and than at your right. You can deposite paper and daily garbage. However, glas is not allowed here. Instead, use the public glas containers located in front of the building.

During check in

1. Set the desired temperature in the living and bathroom. As it's mainly floorheating, it might take a while to heat up.
2. Put the fuse "**boiler**" and "**vloerverwarming**" to ON (UP). You can find these fuses in the storage room in the apartment. It will also take a while for the water to heat up.

During check out

1. The dishwasher has to be emptied. Put all dishes back where they belong.
2. General deep **cleaning** (if not correctly done, it will be charged additionally).
3. **Close** windows and doors.
4. Empty completely the **terraces**, especially the chairs. This is very important in case of storms.
5. Remove all **waste**, empty the **refrigerator**, set temperature selector to 0, and leave the **door open**.
6. Switch off **all heating**
7. **Boiler and floorheating** : fuses OFF (down).



8. Lights : all OFF.

In case of problems or questions

1. GSM owner : +32-475-83.82.33 or secondary +32-475-42.66.62
2. Syndicus : Luc Maes; find his data at the entrance of the building. He should only be called in case of problems to the common infrastructure.
3. Immo Ter Streep : to call in case of practical problems : 059/80.02.52
4. Don't lose your key. In case of lost, we must change the key cylinders by precaution. An additional cost will be charged : 250€+VAT. Cost in case of lost remote control garage : 165€+VAT

Nice to know

1. **Underground storage** of the apartment with lateral seaview (2.6 or 2F) : number 46, at level -3. It's possible to store bicycles via the car elevator (this elevator can be called via your key from the outside). Access to the storage via the building : go to another elevator and press -3 or stairs
2. **Underground storage** of the apartment ground floor (0.2 or OB) : number 19, at level -2.
3. **Underground storage** of the apartment panoramic seaview (4.4 or 4D) : number 6, at level -1.
4. Remote control (**car box**) : car box number 31 at level -2 (see map in folder).
 - a. Button 1 : request elevator to drive to the box
 - b. Button 2 : request elevator to drive out of the building
 - c. Button 3 : //
 - d. Button 4 : open or close the box

While driving into the elevator, you'll notice on your left and right 2 red arrows. Once they are both extinguished, the car is well positioned.

Don't forget to shut down your engine, otherwise the **smoke alarm will be triggered !!!**



5. **Manuals** dishwasher, microwave, washing machine, dryer are in the folder.
6. **Door bel** : Scroll to K&K Operations bvba. You'll find this name 3 times. While watching the screen, you'll see it scrolls to the left. You will see for example "K&K Operations bvba APP 4.4".



SEE SEPERATE FOLDER FOR EXTRA INFO

Access to the apartment with lateral seaview (APP 2.6)

- **Via the main entrance** : follow directions **BLOK 3**; when you enter the building, you go right and then left. At the end you'll find the elevator. Level 2.
- **Via underground garage** : take the elevator till groundfloor. Than go the the elevator for blok 3.

Access to the apartment ground floor(APP 0.2)

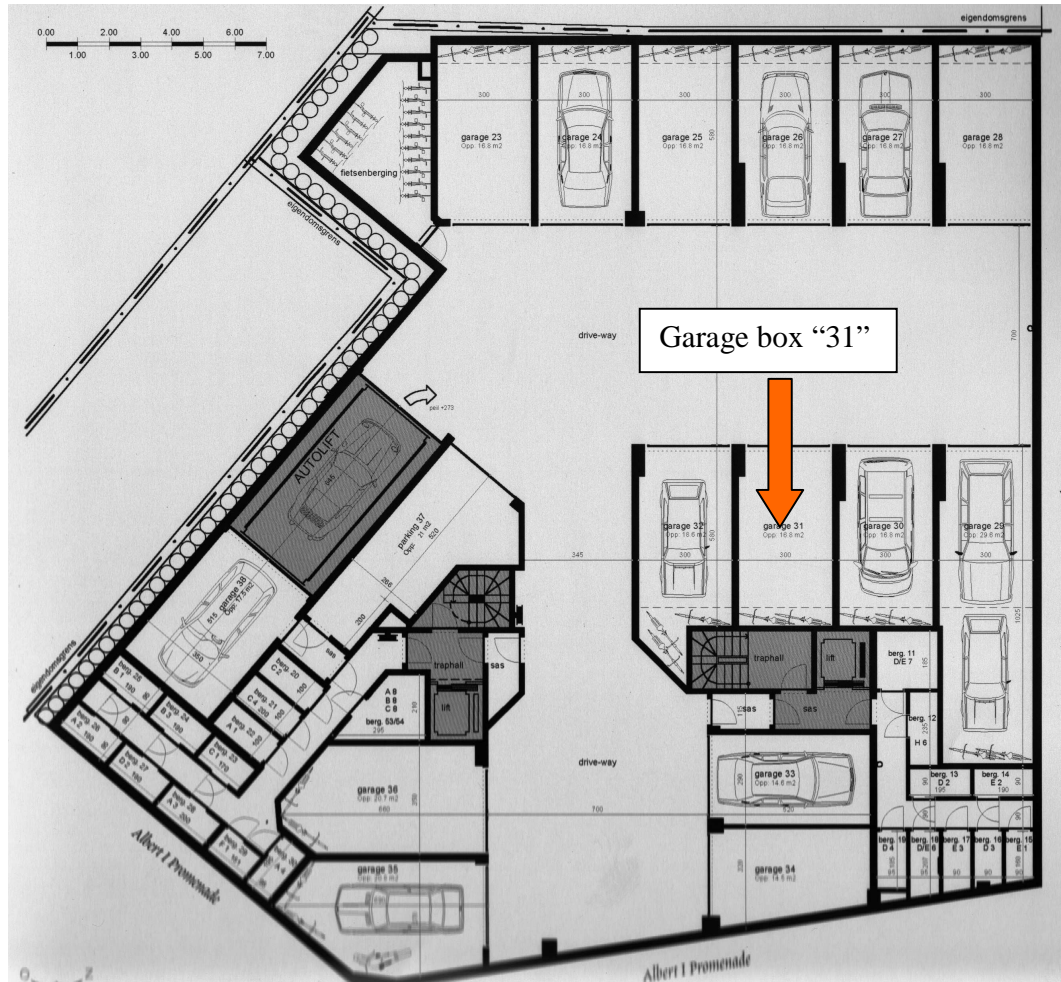
- **Via the main entrance** : follow directions **BLOK 2**; when you enter the building, you go right. At the end you'll find the front door of the apartment.
- **Via underground garage** : take the elevator till groundfloor.

Access to the apartment with panoramic seaview (APP 4.4)

- **Via the main entrance** : follow directions **BLOK 2**; when you enter the building, you go right and then left and immediately right. The elevator will bring you to level 4
- **Via underground garage** : follow directions **BLOK 2**; take the elevator till level 4.

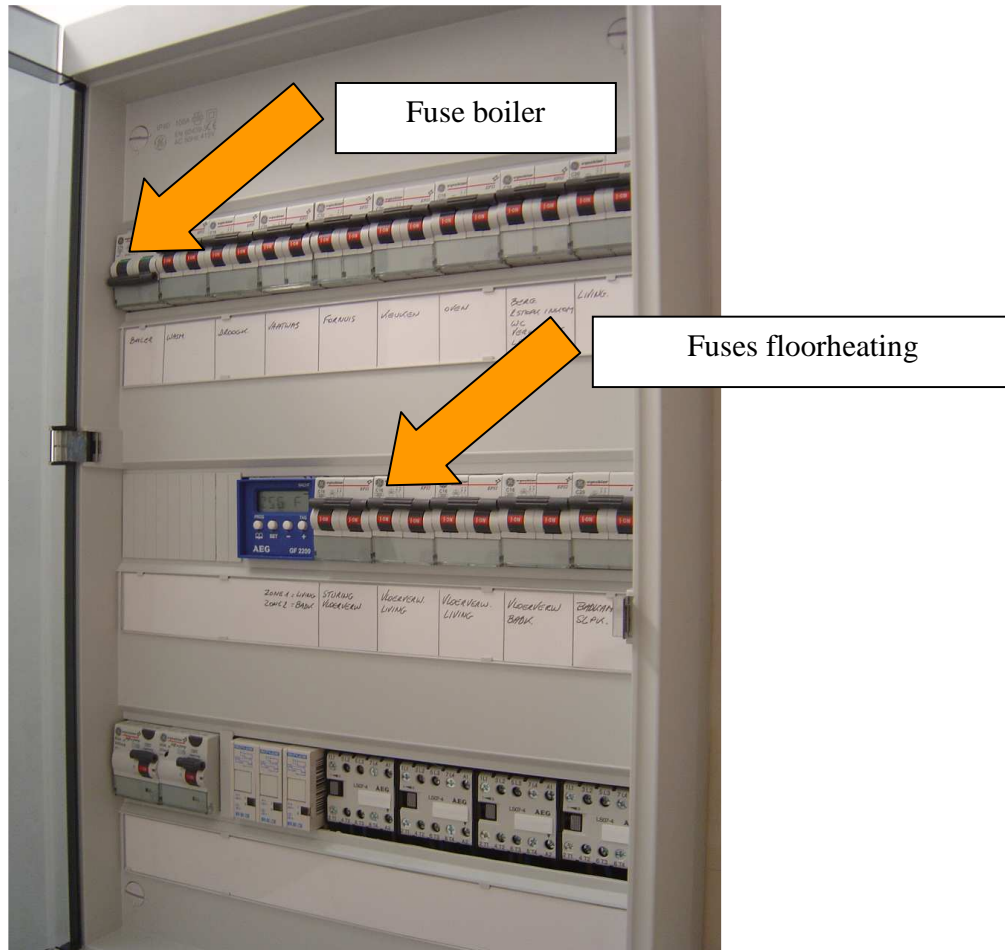


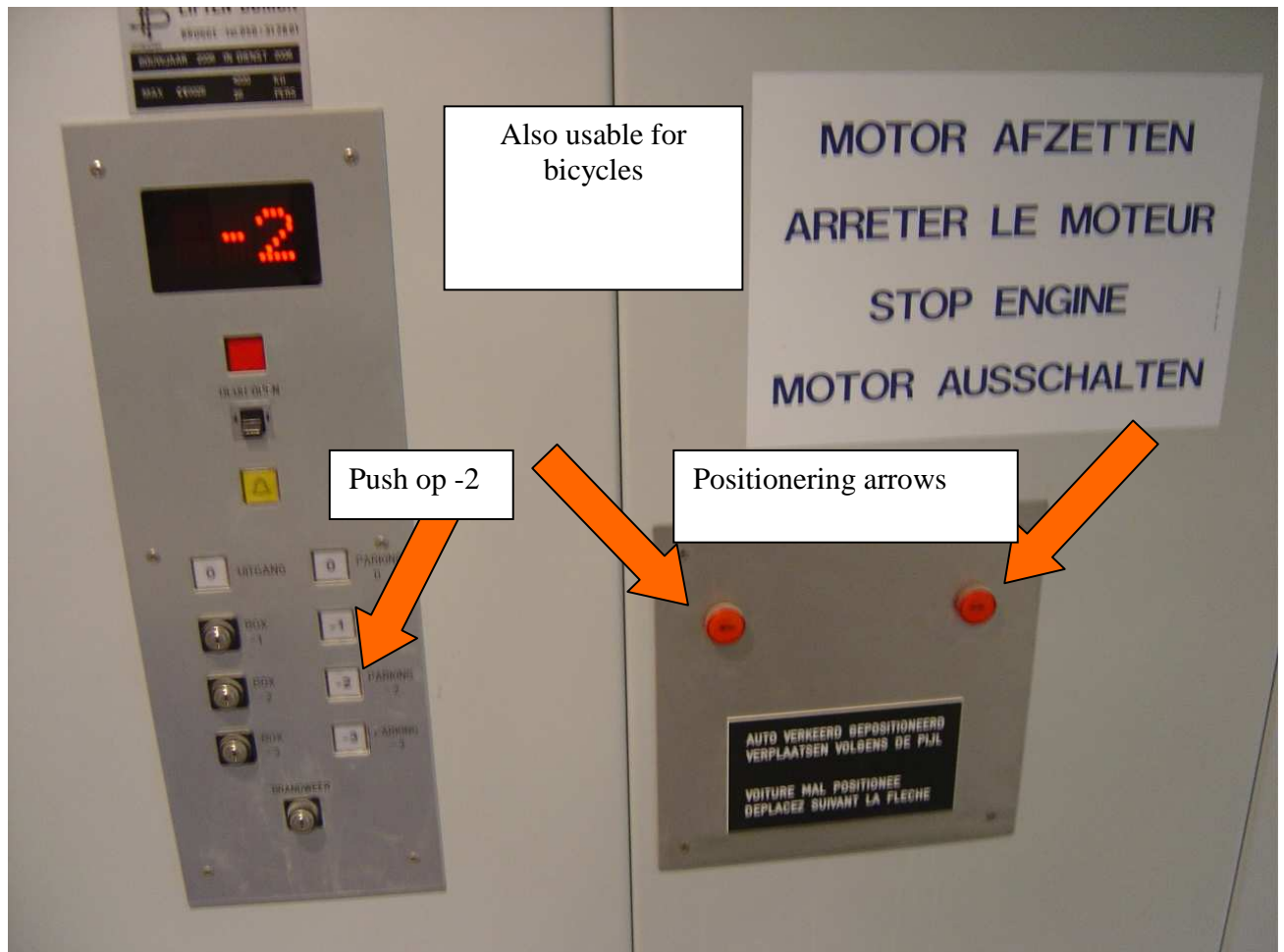
Residence Commodore Ostend





Residence Commodore Ostend

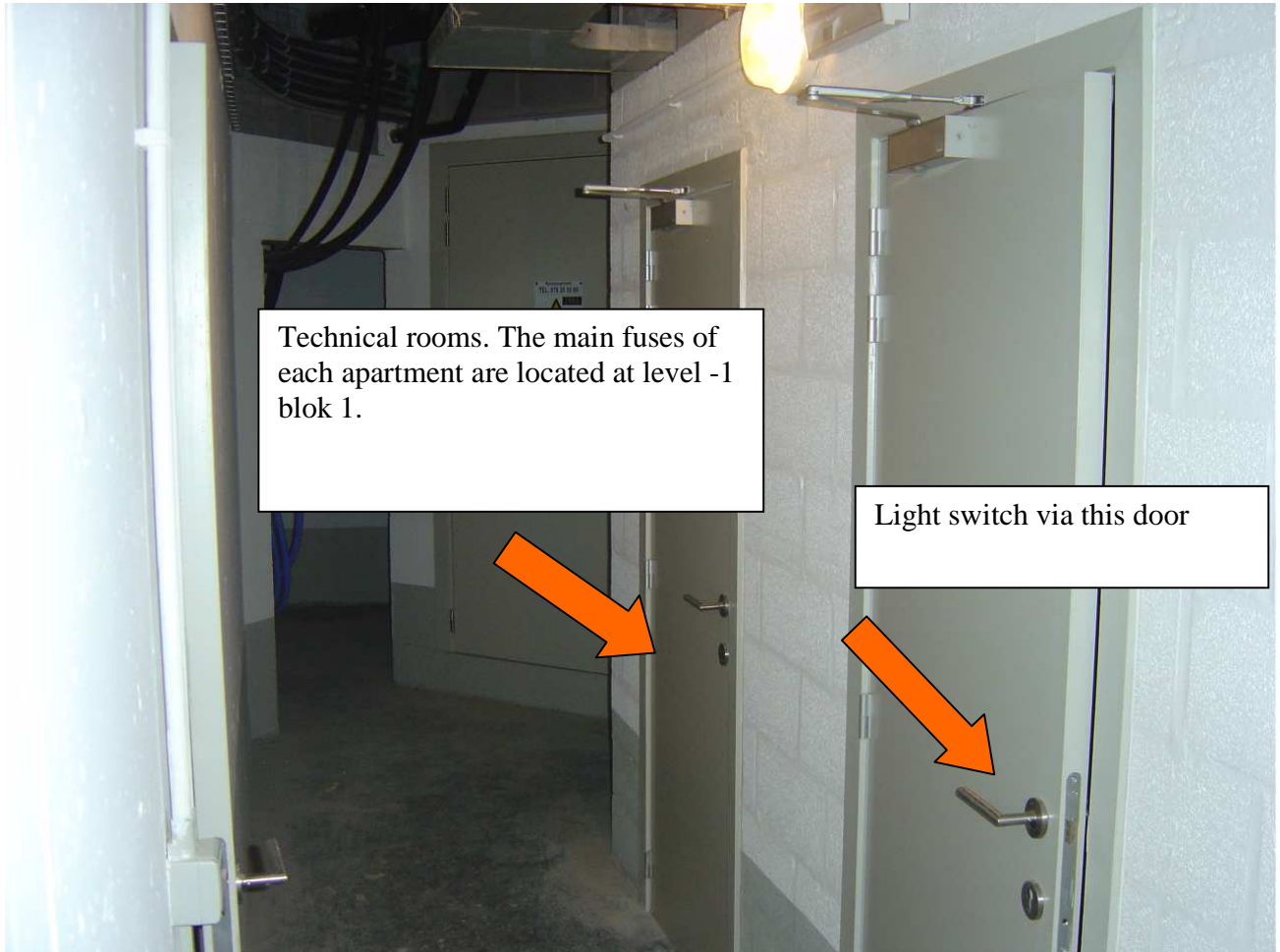




Shutdown your engine, it will trigger the smoke alarm !!!



Residence Commodore Ostend





Residence Commodore Ostend

Dishwasher

Afwasprogramma kiezen (programmatabel)

Afwasprogramma	Geschikt voor:	Soort vervuiling	Programma-verloop					Verbruikswaarden ¹⁾		
			Voorspoelen	Reinigen	Spoelen	Naspoelen	Drogen	Duur (minuten)	Energie (kWh)	Water (liter)
INTENSIV CARE 70 ²⁾	Servies en pannen	sterk vervuild, opgedroogde etensresten, met name eiwit en zetmeel	•	•	2x	•	•	120 - 130	1,80 - 2,00	22 - 24
AUTO (50° - 65°) ³⁾	Servies en pannen	normaal vervuild, opgedroogde etensresten	•	•	1 tot 2x	•	•	90 - 110	1,00 - 1,50	12 - 24
30 MIN (60°) ⁴⁾	Servies zonder pannen	zojuist gebruikt, licht tot normaal vervuild	-	•	-	•	-	30	0,8	9
ECO 50 ⁵⁾	Servies en pannen, temperatuur-gevoelig servies	normaal vervuild	•	•	•	•	•	130 - 160	0,95 - 1,05	14 - 16

Afwasprogramma starten

1. Controleer of de sproeiarmen vrij kunnen draaien.
2. De kraan helemaal opendraaien.
3. De toets AAN/UIT indrukken.
4. Gewenste programma kiezen. De programma-indicatie brandt.
5. De deur sluiten. Het afwasprogramma begint.

Afwasprogramma onderbreken of afbreken

Onderbreek een lopend afwasprogramma alleen als het absoluut noodzakelijk is.

Afwasprogramma onderbreken door het openen van de deur van de afwasautomaat



Bij het openen van de deur kan hete damp naar buiten komen. Verbrandingsgevaar!

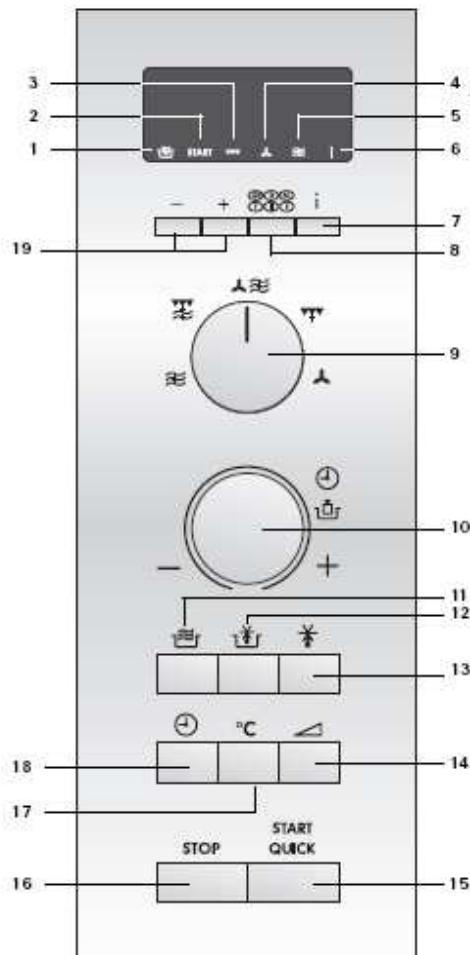
1. De deur voorzichtig openen. Het afwasprogramma stopt.
2. De deur sluiten. Het afwasprogramma loopt verder.

Afwasprogramma afbreken

1. De functietoetsen 2 en 3 indrukken en ingedrukt houden. De LED-indicaties van alle programmatoetsen die u nu kunt kiezen branden.
2. De functietoetsen loslaten. Het afwasprogramma is afgebroken.
3. Als u een nieuw afwasprogramma wilt starten, controleer dan eerst of er afwasmiddel in het vakje aanwezig is.



Microwave



Digital display and indicators:

- 1 COOKING indicator
- 2 START indicator
- 3 GRILL indicator
- 4 CONVECTION indicator
- 5 MICROWAVE indicator
- 6 INFORMATION indicator

Operating buttons:

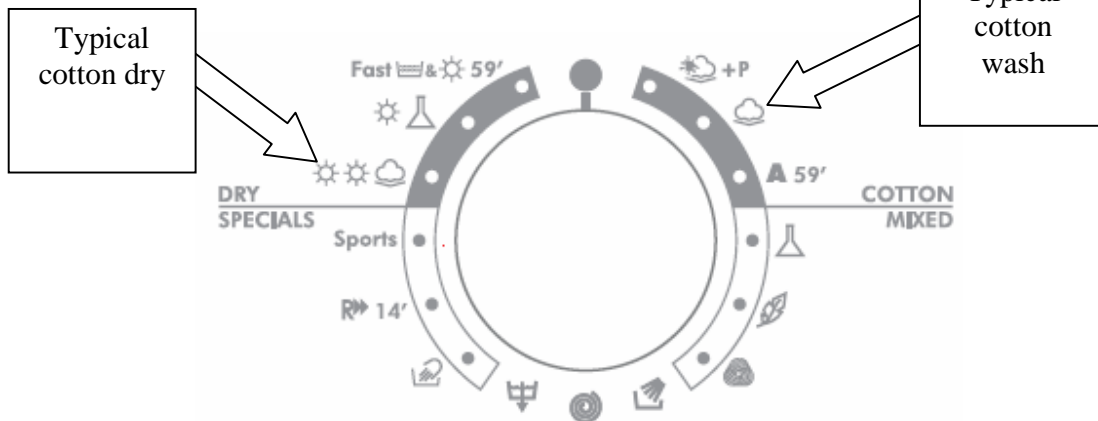
- 7 INFORMATION button
- 8 LANGUAGE button
- 9 COOKING MODE knob
 - ☰ for microwave cooking
 - ☷ for microwave cooking with GRILL
 - ☶ for microwave cooking with CONVECTION
 - ☹ for GRILL
 - ☺ for CONVECTION
- 10 TIMER/WEIGHT knob
Rotate the knob to enter either the cooking/defrosting time or weight of food.
- 11 AUTO COOK button
- 12 COOK FROM FROZEN button
- 13 AUTO DEFROST button
- 14 MICROWAVE POWER LEVEL button
- 15 START/QUICK button
- 16 STOP button
- 17 CONVECTION button
- 18 CLOCK SETTING button
- 19 LESS/MORE buttons



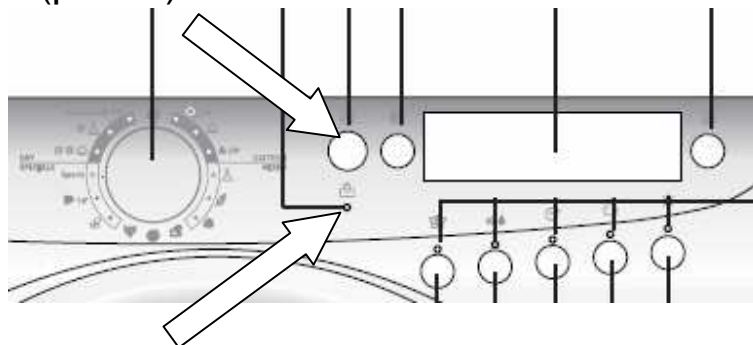
Washing machine - dryer

Quick start :

1. put the laundry in the ***** (3-5kg max)
2. put wasmiddel in middelste zeepbakje doen
3. choose program :



4. push start (pause)



5. attention : if this led lights up, the door is locked and cannot be opened. **Do not force this door !**
6. to stop during the program : put the program selector to the top selection, but be carefull for point 5 !

